



Kendal Street | London | W2

£519 Per Week |

 1  1  1  D

ADN
RESIDENTIAL

A well presented first floor apartment situated in a popular portered block located 0.1m to Marble Arch & Hyde Park. This fantastic property benefits from wooden flooring and comprises; spacious reception room, modern fitted kitchen, principal bedroom with built-in wardrobes and a family bathroom. Additional benefits include inclusive heating and hot water, lift and access to communal gardens.

-
- Reception room
 - One bedroom
 - Lift
 - Communal Gardens
 - Kitchen
 - Family Bathroom
 - Porter
-

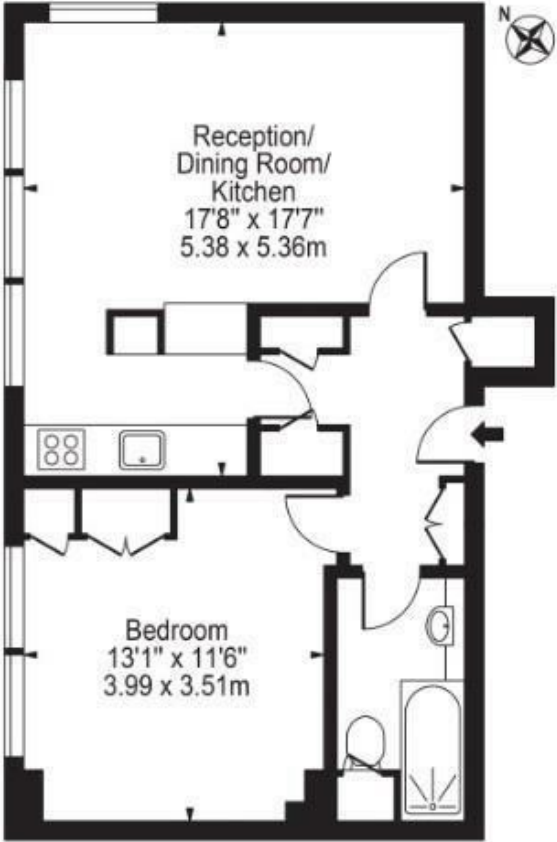
Council Tax Band: F
EPC: C



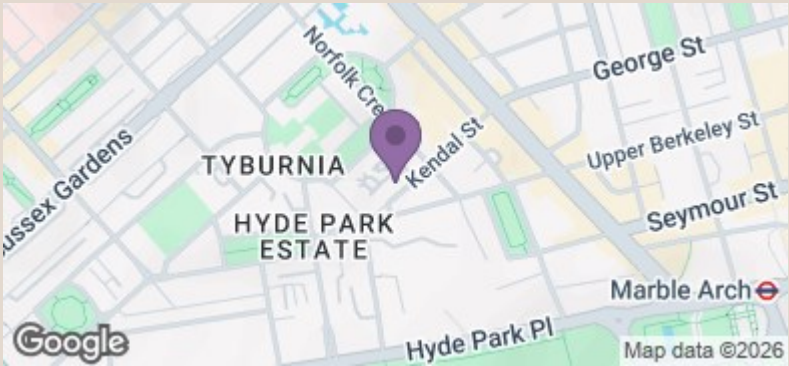




Coniston Court Approx. Gross Internal Area 543 Sq Ft - 50.45 Sq M



First Floor
For Illustration Purposes Only - Not To Scale



Energy Efficiency Rating		
	Current	Potential
Very energy efficient - lower running costs		
(92 plus) A		
(81-91) B		
(69-80) C		
(55-68) D	61	70
(39-54) E		
(21-38) F		
(1-20) G		
Not energy efficient - higher running costs		
England & Wales		EU Directive 2002/91/EC